

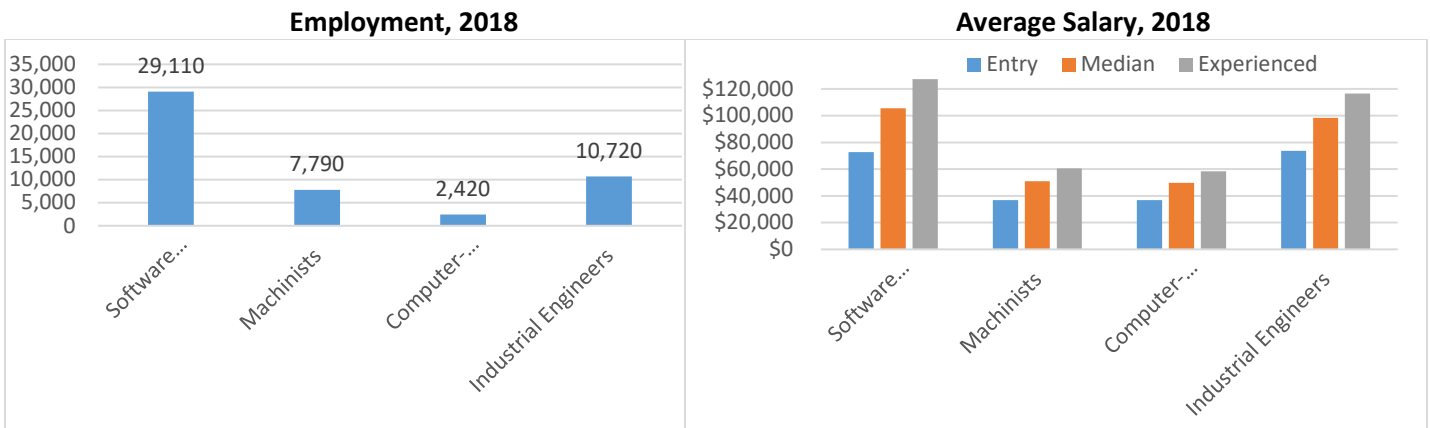


## Careers in Computer-Aided Design (CAD) & 3D Printing

Computer-Aided Design (CAD) is used to create two-dimensional (2-D) designs or three dimensional (3-D) models. CAD software is used in a wide variety of occupations in manufacturing and information technology. If you enjoy technology and being creative, a career that uses CAD software could be for you.

If you like Computer-Aided Design (CAD) you may see yourself in a CAREER like...

- Software Developers, Applications
- Machinists
- Computer-Controlled Machine Tool Operators
- Industrial Engineers



**How do I get there? Potential Career Pathways:**

### Software Developers, Applications

Bachelor's Degree → Software Developers, Applications → Computer and Information Systems Managers

### Machinists

Vocational Training/Certificate → Machinists → First-Line Supervisors → Industrial Production Managers

### Computer-Controlled Machine Tool Operators

Vocational Training/Certificate → Computer-Controlled Machine Tool Operators → First-Line Supervisors → Industrial Production Managers

### Industrial Engineer

Associates Degree → Industrial Production Technician → Bachelor's Degree → Industrial Engineer → Industrial Production Managers

[Learn more about these exciting career opportunities:](#)

**Occupational Outlook Hand Book** - can help you find career information on duties, education and training, pay, and outlook for hundreds of occupations. <https://www.bls.gov/ooh/home.htm>

**MassHire:** [masshire-nscareers.org](http://masshire-nscareers.org)

**Youth Career Center** – We assist young adults with job applications, resume writing, interviewing, and other work readiness skills, and can help you find gainful employment opportunities. We're located at 117 Franklin St., Lynn, MA. Come visit us today! Our walk in hours are from 12pm to 5pm or call us @ 781-691-7430.

**Career Center** (Adult services) Walk in to our office at North Shore Community College on Broad Street in Lynn or 70 Washington Street in Salem! Call us at (978) 825-7200.